



# ANNUAL REPORT

2020-2021

WORKING ALONGSIDE COMMUNITIES  
TO BUILD ENGAGEMENT  
AND EMPOWERMENT

---

RĀKAU   
TAUTOKO

[www.rakautautoko.com](http://www.rakautautoko.com)

[tara@rakautautoko.com](mailto:tara@rakautautoko.com)

# IN REFLECTION

---

## **Stepping in and out of crisis...**

In reflection, this year was challenging in every way, COVID-19 has made a massive impact on how we run our projects at Rākau Tautoko. We have needed to work closely with our communities, funders and contractors to plan out a different way of working that will still benefit our whānau.

The main way of working for Rākau Tautoko is kanohi ki te kanohi, and the level 3 + 4 isolations have prevented us from being able to practice within what we know to be our tikanga and kawa. Instead we have needed to pivot, and learn how to work from afar. Part of this has also meant that we have needed to close or hand over projects that were difficult for us to manage. The Papakura food scraps co-design was one of those projects which we had to close with Council. At first, we attempted to pivot to online, but because we hadn't begun the engagement, we didn't have strong connections to rely on, and the wide door knocking interview part of the project would have put the community at risk. Another project that we needed to pivot quickly on was Hub Zero. Hub Zero was a large project for Rākau Tautoko, and we were about to launch to a strong South Auckland programme to gather and support waste based social enterprises and businesses to grow and create recycled and upcycled items. However we were unable to gather and run workshops or gatherings. After first attempting some workshops online with only small numbers connecting, we shifted our focus to working in partnership with All Heart - who we were subleasing from - and worked on employing locals to create just one waste based social enterprise with viable products from MDF board. We are grateful for Foundation North for their support through that pivot and for LJ and Joe from All Heart for their willingness to partner in such a difficult time. We're proud to say that pivot paid off and All Heart are now leading that work with a viable enterprise and team of upcyclers.

This enabled Rākau Tautoko to shift our focus from our current projects to a high need in the community - food security and sovereignty. The Kai Collective launched in March 2020 and has grown strong with a five lead partnership - two groups in Maungakiekie and two groups in Tāmaki, with Rākau Tautoko supporting the management. Our ultimate goal for The Kai Collective is food sovereignty for all, the first step being immediate food security with food parcels throughout the lockdowns. We are proud of our partnerships especially with The Good Fale, Faith Family Connect and Synergy Projects and will continue to grow this project.

One note on the financials, we did not do well with administration costs this year. We relied too heavily on people volunteering their time to run Rākau Tautoko and we need to work better at sustainability for our practitioners in the future.

# ENTITY STRUCTURE

---

Rākau Tautoko is an Auckland-based social enterprise undertaking community-related projects, community research and development advice, facilitation and leadership. We are a network of skilled, creative and like-minded practitioners who enjoy working together and take pride in doing high quality community work.

Rākau Tautoko creates supportive opportunities for community practitioners to develop their knowledge and skills, apply their philosophy and exercise appropriate accountabilities.



## OUR MISSION

Our mission is to build engagement and empowerment in communities by:

- assisting community groups to co-design programmes that produce a positive social impact;
- undertaking research, development and training to contribute to building engagement and empowerment in communities (including by supporting whānau to develop healthy relationships to help combat family violence and improving the wellbeing of rangatahi);
- and other charitable purposes as the Board may decide.

# A word from our Board

---

## Tracey Wakefield



"Rākau Tautoko has had another year of proving itself to be an innovative collective of talented practitioners. Covid has been a challenge for many organisations and therefore it has been so encouraging to see that Rākau Tautoko has been able to respond to the increased demands of this changing environment, while remaining committed to community empowerment and ownership. I'm honoured to be a part of this journey and want to say thank you to our practitioners, partners and funders, thank you for believing in the vision of Rākau Tautoko and trusting us to remain true to it."

"This has been one of the most challenging years that Rākau Tautoko has endured, however with innovation, clear communication, planning and understanding we have been able to move from strength to strength. Our shining lights have been our practitioners. You guys are amazing and despite the massive shift in the lockdowns and working from home for a lot of months, you have continued to support our communities. Thank you!"

## Tara Moala



## Anna-Jane Edwards



"It is such a privilege to be a part of an organisation which is deeply committed to creating a more equitable Aotearoa. Despite all the challenges of 2021, Rākau Tautoko has come out of this year with an incredible depth of work and in a stronger financial position. This is testament to Tara's leadership and the collective wisdom and resilience of our practitioners and wider community. I am excited about what the future will bring!"



# THE TEAM

---



Jo Flavell



Theresa Holmes



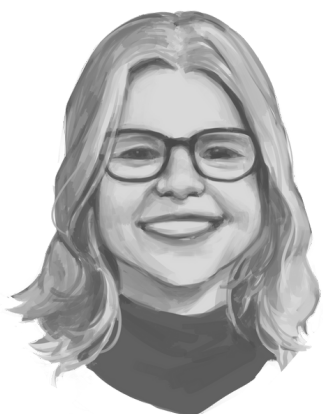
Jasmine Hope



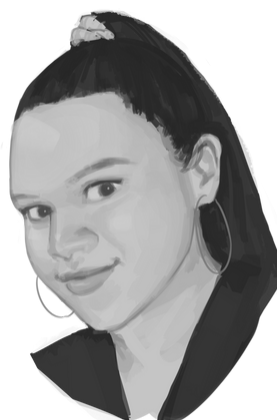
Dickie Humphries



Ren Joe



Nikki Korte



Latisha Puti



Simon Li

# THE TEAM

---



Mara Slatter



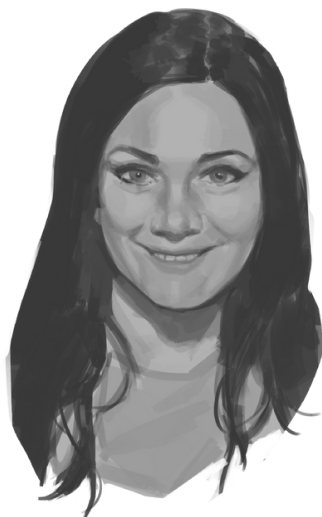
Rosita Faavesi Sua



Tyrone Tangata-  
makiri



Candace Weir



Ashley Gordon



Natalie Atašani



Trish Atašani



Monie Joe



## SUPPORTED 15 COMMUNITY DEVELOPMENT PRACTITIONERS IN THEIR PRACTICE

### CONNECTED WITH AND WORKED TOWARDS EMPOWERING 10 AUCKLAND GEOGRAPHICAL COMMUNITIES

- GLEN INNES
- POINT ENGLAND
- PANMURE
- RIVERSIDE
- ORANGA
- MT WELLINGTON
- ONEHUNGA
- ŌTARA/PAPATOETOE
- AUCKLAND CENTRAL
- MANUKAU

### WORKED ALONGSIDE 7 COMMUNITIES OF INTEREST

- WASTE REDUCTION
- WASTE BASED SOCIAL ENTREPRENEURS
- DECONSTRUCTION
- FAMILY VIOLENCE PREVENTION
- YOUTH
- WOMEN EMPOWERMENT
- PALLIATIVE CARE SUPPORT
- FOOD SECURE SECTOR
- YOUTH

## CREATED AND MAINTAINED 15 PARTNERSHIPS WITH KEY ENTITIES TO FURTHER STRENGTHEN OUR COMMUNITY INITIATIVES

- |                                |                              |                               |
|--------------------------------|------------------------------|-------------------------------|
| • ALL HEART                    | • NO SIX                     | • TAMAKI WRAP                 |
| • THE GOOD FALE                | • PAIRED UP                  | • TAMAKI REGENERATION COMPANY |
| • GROWING UP IN NZ             | • PANAMASIANS                | • TE WAIPUNA PUAWAI           |
| • FLIPPING EAST                | • SYNERGY TRUST              | • TAMAKI PAN-PASIFIKA NETWORK |
| • THE NEW ZEALAND FOOD NETWORK | • THE UNIVERSITY OF AUCKLAND |                               |





## PROJECT AREAS





# Community Initiative Projects

---

## COVID-19 Response

The Kai Collective. A collective of community groups that came together to support our whānau most in need of food support. The collective responded by creating a network of food rescue, purchasing and distributing through many different local leaders in East and South Auckland. This was started in the first lockdown, in March 2020 right through to present. Financial support has been given to the collective through Foundation North, Civil Defence (through Auckland Council), and the Ministry of Social Development. The majority of our food support has been received by Kiwiharvest and later on by The New Zealand Food Network. This has included:

- Receiving approximately 2 x tons of food each week
- Supporting over 200 x whānau a week
- Working alongside over 10 x community leaders in our collective
- Creation of innovative responses like regular van / truck hireage, pop up social supermarkets, store houses, and hubs.



## Social Impact Summit - Kai

In partnership with The Good Fale, and with support from Foundation North, we hosted a space where practitioners and stakeholders from different sectors could connect, collaborate, explore and learn together. This year, we focused on food security, food sovereignty and the food system. The 3-day summit attracted over 100 practitioners and community workers who showcased, innovated and tested out models for redesigning the food system.



## Repair Cafe - South Auckland

Support from the Otara-Papatoetoe Local Board to run a Repair Cafe in Manukau, South Auckland. We hosted at our partners premises All Heart with eight other expert volunteers. We serviced over 20 x participants and received a total of 44 x items, with a 66% success rate for repairs.

# Community Initiative Projects

---

## Hub Zero - Maungakiekie / Tāmaki

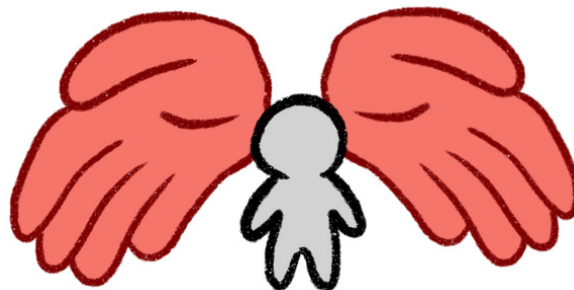
Working in partnership with Tāmaki WRAP, 10 x capability building workshops and 11 x community events were run throughout 2020, between each of the lockdowns. Funding was sourced by the Maungakiekie-Tāmaki Local Board who graciously extended our timeframe out to the end of 2020, in recognition of all the lockdowns we experienced in Auckland.



---

## Hub Zero - South Auckland

Early in 2020, Rākau Tautoko pivoted The Hub Zero Project quickly into a strong partnership with All Heart in direct response to the lockdowns. This secured a stronger foundation and together we focused on building one core waste based social enterprise. This enterprise focuses on creating a repurposing workshop tackling one of the hardest products to repurpose - MDF Board. The workshop has successfully created several products and services and by the end of this financial year, has expanded the number of staff and is working on financial independence. Rākau Tautoko has gifted the project over to All Heart to continue to lead in this space, with full support. Acknowledgement and thanks to Foundation North for the seed funding to set up this project and for supporting the different pivots as we grew.



## The HEART Movement

Mentoring HEART Change Agents to create and run community events in Tāmaki to enable healthy relationships and prevent family violence through local community BBQ's, relationship workshops & the Mana Wāhine conference.



## Phenomenal Young Women

The ongoing support of a local youth programme for young women in Tāmaki. The plan was to run the programme in Tāmaki College by two young women, we pivoted to providing regular gatherings online for the wellbeing of young women to feel safe and empowered through the lockdowns. Support and acknowledgements to our funder Auckland Foundation for enabling us to pivot our funding in The Grassroots Giving Programme to online support for our young women of Tāmaki.

# Capability Building Projects

---



## **Panamasian Capability Growth**

Supporting the growth of local Riverside community group - Panamasian's capability to be able to run community events, to grow their capacity and capability, and to set up their own systems. The Maungakiekie-Tāmaki Local Board has been an ongoing support throughout this year for us to work alongside our community, in and out of lockdowns. Some of the resources allocated for capability, was pivoted to individual whānau support through the lockdowns, especially for sanitary, health and safety equipment. Despite the lockdowns, the group managed to grow and support their community with several community events and grow their numbers.

## **Digital Capability Growth**

Supported by the Maungakiekie-Tāmaki Local Board, 22 x mentoring sessions were offered with over 20 x people throughout Maungakiekie-Tāmaki. Through those sessions, participants skills were developed in filming and editing videos using smartphones, content strategy for social media, technical support and communication platforms, and designing digital graphics using online software. It has become very clear that there are a lot of people wanting ongoing support for digital capability.





# Research Projects

---

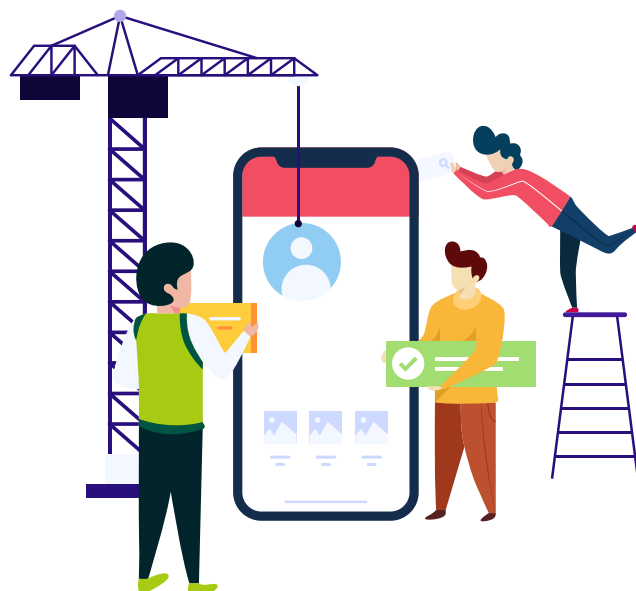


## Food Secure Communities

As part of the Kai Collective and working alongside the community leaders that are part of that collective, a Food Secure Communities plan was created that will build on the work that the Kai Collective has been working towards. This plan that will encompass our immediate and future aspirations to ensure all of our whānau in our communities are able to have access to affordable and nutritious food. This work has been supported by the Ministry of Social Development.

## Growing Up In NZ

App creation co-design. The Co-design Lab approached us to support Growing Up In NZ to co-design an app for their research project. Our part of the project was to work alongside the Growing Up team to learn the process of co-design, and then support engagement with Auckland based participants of their research to test and innovate some ideas for the App.



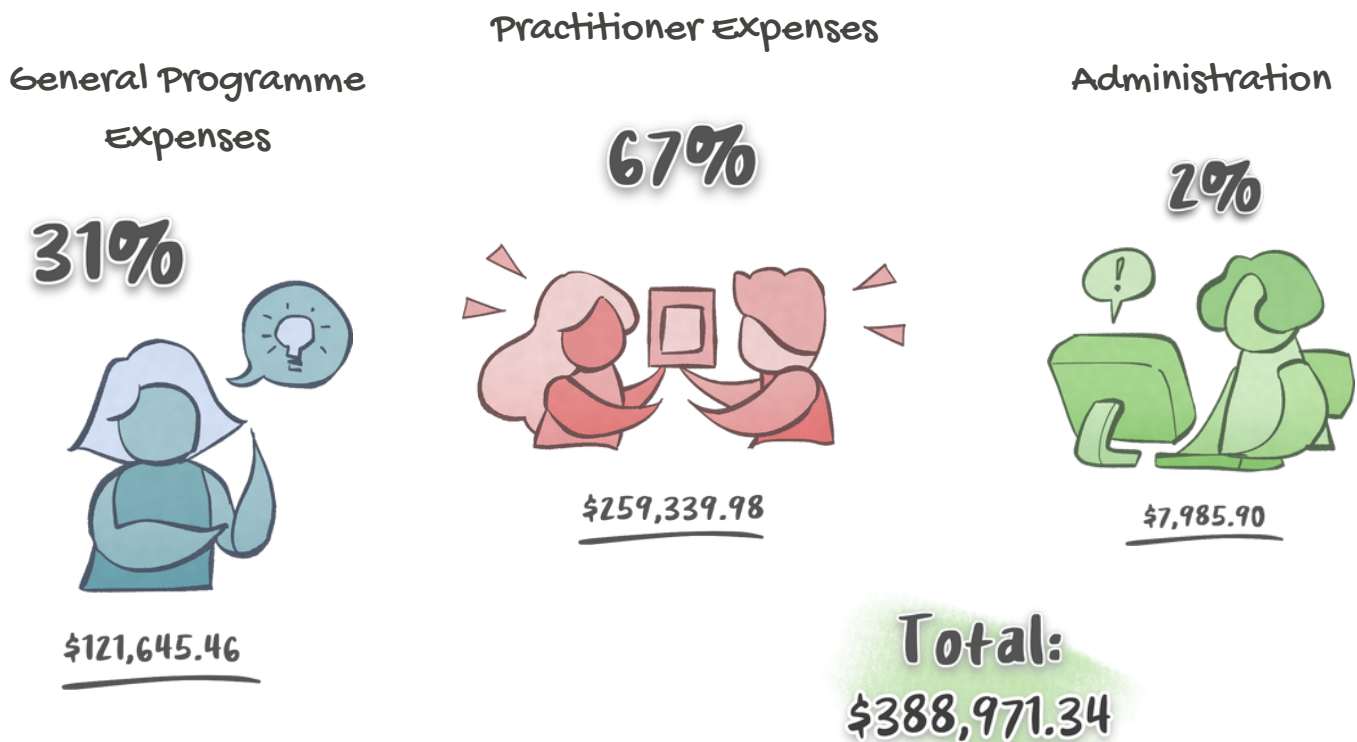
## Palliative Care Research

Working alongside Auckland University, we developed and co-designed recruitment for participants that have experienced or were currently experiencing the Palliative Care System for themselves or their loved ones, while also experiencing low socio-economic conditions. The research included recruitment, relationship management, interviews, documenting and implementation of possible ideas.

# Financials at a glance

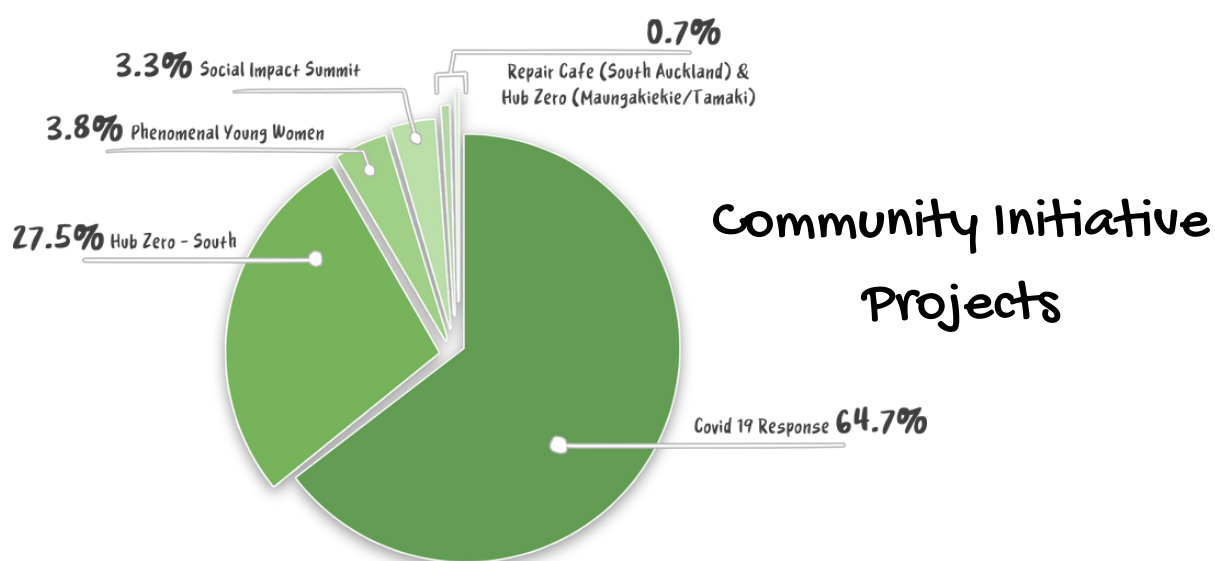
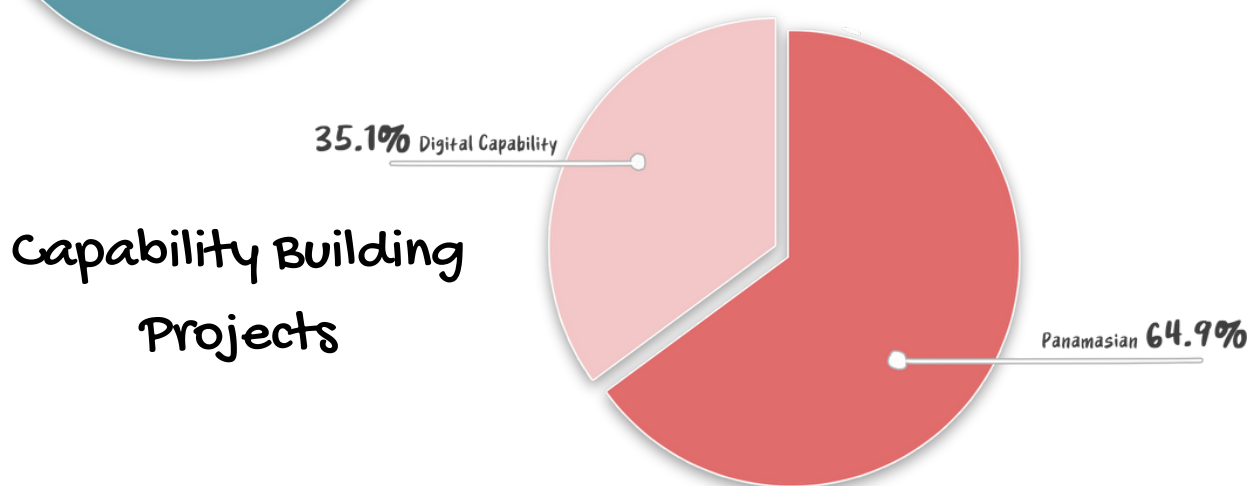
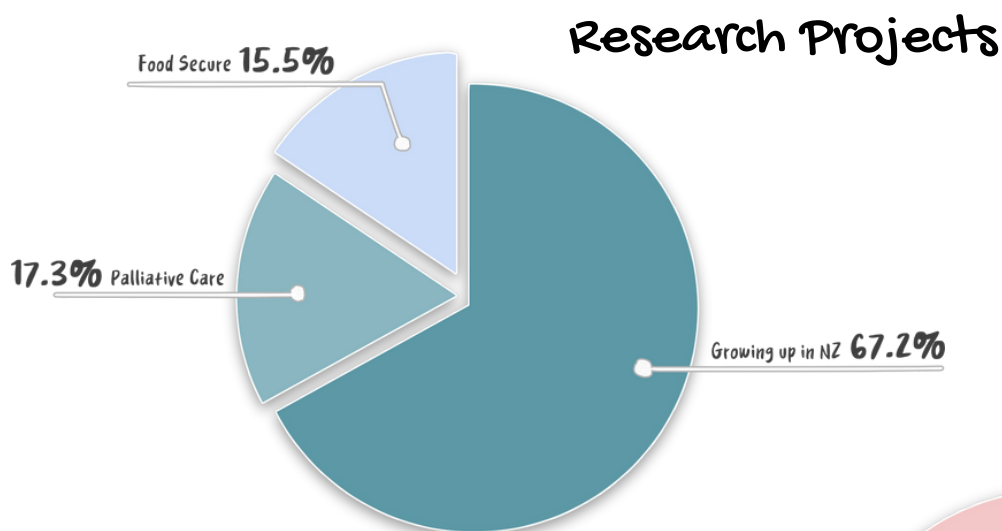
## GENERAL COSTS OVER 2020-2021

Breakdown of Costs per Project		
Project Type	Percentage	# of Projects
Community Initiative Projects	88%	6
Research Projects	6%	3
Capability Building Projects	6%	2
Total	100%	11



# Financials at a glance

---





# Some thoughts from our partners

---

"I wish to express, on behalf of the Panamasians O Tuia (PoT), our warmest thanks and appreciation to Rākau Tautoko for the support we have received over the past financial period. We wish to give particular thanks to Jo Flavell for her leadership and service. She has engaged with Panamasians on a range of initiatives on the ground, such as community dinners, food boxes, empowering women and assisting our group toward establishing our own identity as an independent charitable trust. This work is ongoing. There is much more work to be done in the community and we look forward to continuing our close relationship with Rākau Tautoko into 2022."

**Tony Fautua**  
Panamasians Ō Tuia

**Carla Perese**  
Faith Family

"This collective practises an empowered community approach while walking the same pace as the Tāmaki community. I enjoy working with Rākau Tautoko because they have a community first approach and understanding / respect of the community. "

"It is our absolute pleasure to shout out to Rākau Tautoko for the amazing mahi you all do and have given us in the Tāmaki area. Your valuable insights to build up our community is amazing. We look forward to working with you and for you again."

**Shatna Roberts**  
Tamaki WRAP

**LJ**  
All Heart

"Our partnership with Rākau Tautoko flourished into a whānau relationship. Working together to positively impact our people and planet and providing hope and dignity to our communities"